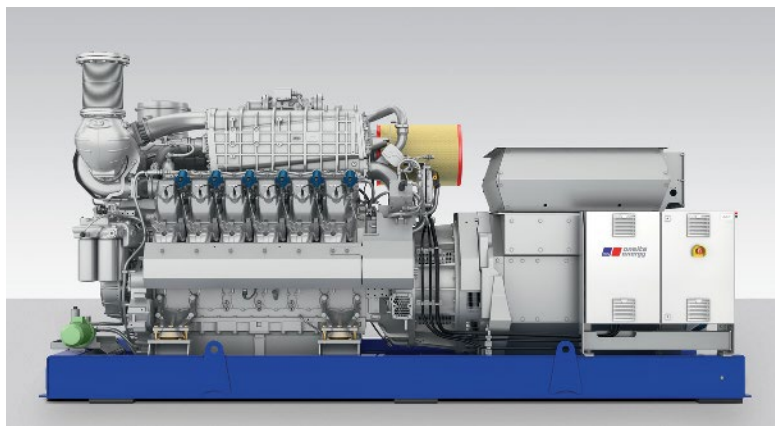


PERTAMINA NG LUBE ASHLESS

SAE 30, 40



Characteristics	Test Method	NG LUBE ASHLESS SAE 30	NG LUBE ASHLESS SAE 40
SAE Viscosity Grade		30	40
Density at 15 °C, kg/l	ASTM D - 4052	0.8860	0.8891
Kinematic Viscosity at 40 °C, cSt	ASTM D - 445	88.90	143.40
at 100 °C, cSt	ASTM D - 445	10.75	14.59
Viscosity Index	ASTM D - 2270	105	100
ASTM Colour	ASTM D - 1500	L 2.0	L 2.5
Flash Point, °C	ASTM D - 92	246	245
Pour Point, °C	ASTM D - 5950	-9	-9
Total Base Number, mg KOH/g	ASTM D - 2896	1.86	1.85

NG LUBE ASHLESS Series are gas engine lubricant that formulated from high quality base oil (low carbon formation Tendency) with ashless detergent dispersant, antiwear and antioxidant additives to reduce deposits in engine and exhaust port.

PERFORMANCE LEVELS

NG LUBE ASHLESS Series meet API CC and the requirements of two stroke gas engine made by Ajax, Clark, Cooper-Bessemer and Fairbanks-Morse engine.

SUPERIORITIES

- Maintain engine cleanliness, intake and exhaust port from deposit formation.
- Prevent ring sticking and deposit formation in piston groove.
- Very effective in preventing wear of piston ring and cylinder liner.
- Having high resistance to oxidation and nitration
- Prevent preignition and spark plug fouling.

APPLICATIONS

NG LUBE ASHLESS Series are recommended for all

HIGH QUALITY GAS ENGINE OIL

type of two stroke gas engines operating at low and medium speed where low ash or ashless oils are required.

NG LUBE ASHLESS Series are intended for two stroke gas engine naturally aspirated type or turbocharged type, operating on clean gas.

NG LUBE ASHLESS Series are not recommended to be used in four stroke gas engine.